

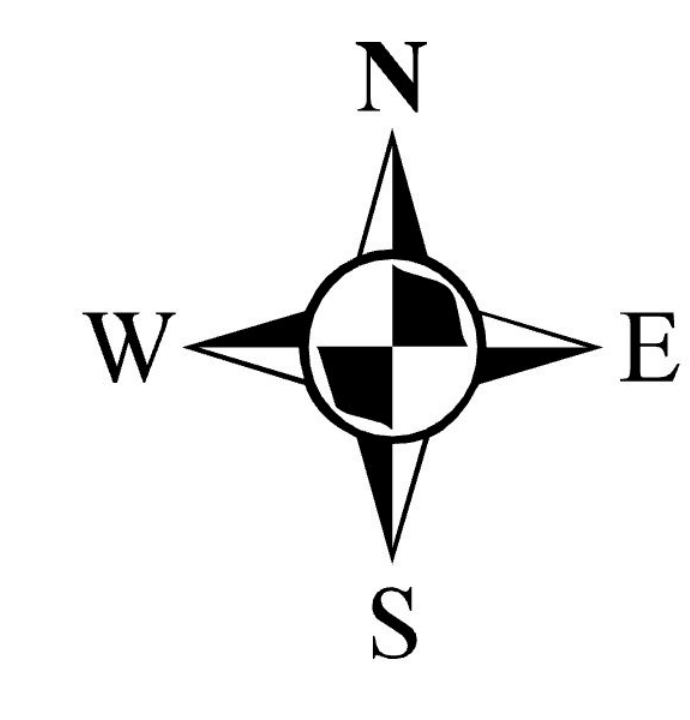


# ZONING MAP OF WEST WINDSOR TOWNSHIP

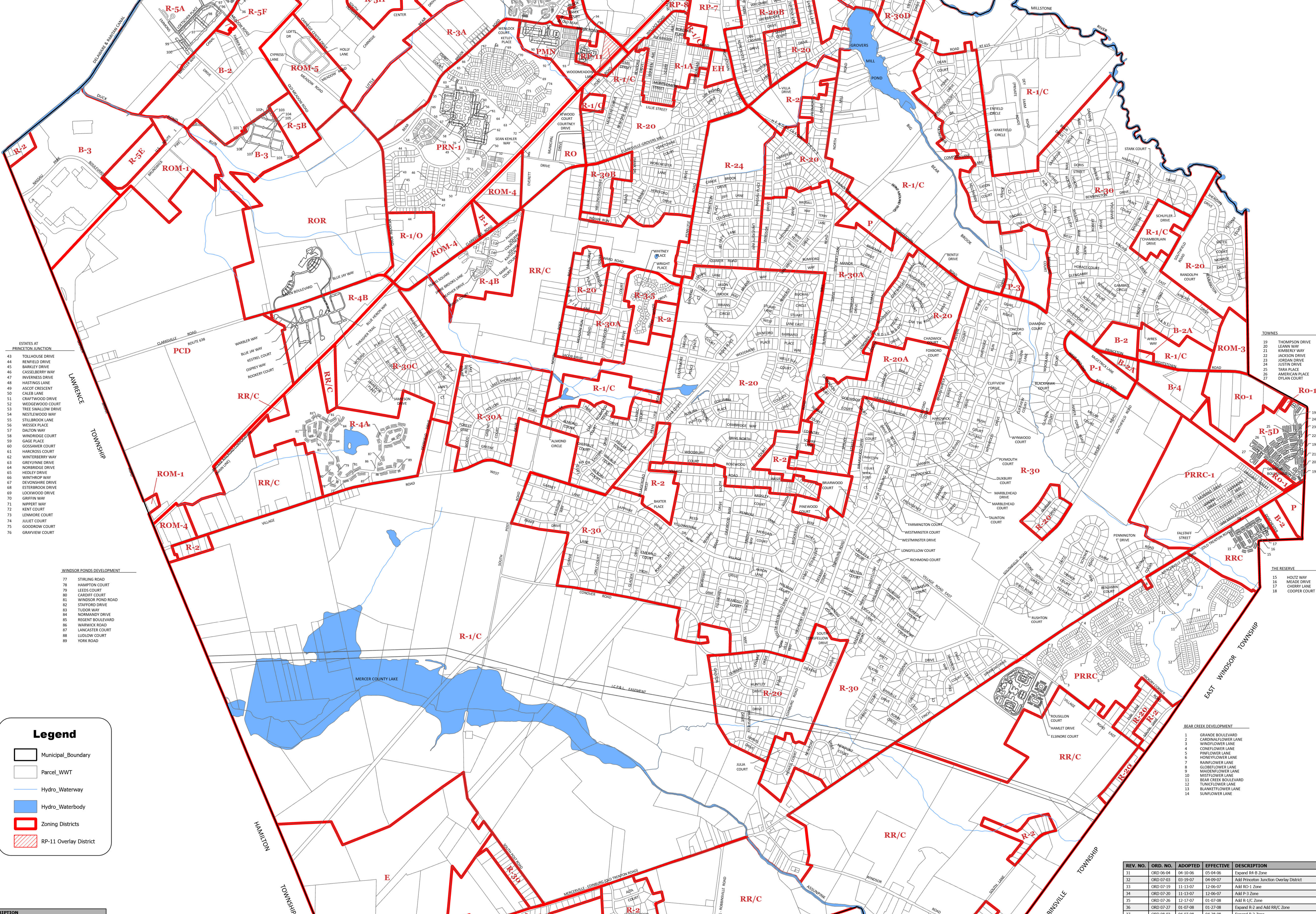
MERCER COUNTY, N.J.

FRANCIS A. GUZIK - TOWNSHIP ENGINEER  
JOHN B. TAYLOR - ASSISTANT TOWNSHIP ENGINEER

Date of Printing: 3/9/2026



- PRINCETON GREENS**
- 1 ASTOR COURT
  - 2 FOUNTAIN COURT
  - 3 BELLE DRIVE
  - 4 HICKORY DRIVE
  - 5 CARLE COURT
  - 6 HANOVER DRIVE
  - 7 DEER COURT
  - 8 LEVINSON COURT
- PROJECT FREEDOM**
- 9 FREEDOM BOULEVARD
- CARRIAGE RESIDENTIAL VILLAGE**
- 10 DORSET COURT
  - 11 COLBORNE COURT
  - 12 KENNINGTON COURT
  - 13 NORTON DRIVE
  - 14 CLARKE COURT
  - 15 DELMAR DRIVE
  - 16 WORLDWIDE COURT
  - 17 FEDERAL COURT
  - 18 COMMONWEALTH COURT
  - 19 STONERIDGE LANE
  - 20 HEARST COURT
  - 21 TRUMBULL COURT
  - 22 TOWNSEND COURT
  - 23 ALDgate COURT
  - 24 HERITAGE BOULEVARD
  - 25 SALIM COURT
  - 26 LOWELL COURT
  - 27 TRINITY COURT
  - 28 CARLTON BOULEVARD
  - 29 THORNTON COURT
  - 30 CROFTWOOD COURT
  - 31 HAMPSHIRE COURT
  - 32 FELDWOOD COURT
  - 33 NOTTINGHAM CIRCLE
- COVENANCE POINT**
- 34 BARNER COURT
  - 35 ACADIA COURT
  - 36 SEASIDE COURT
  - 37 CASCADE COURT
  - 38 BRISBANE COURT
  - 39 WINDAGE COURT
  - 40 MARIAN COURT
  - 41 GUNNICK COURT
  - 42 GUNNICK COURT



**Legend**

- Municipal Boundary
- Parcel\_WWT
- Hydro\_Waterway
- Hydro\_Waterbody
- Zoning Districts
- RP-11 Overlay District

ZONE	DESCRIPTION
B-1	NEIGHBORHOOD CENTER BUSINESS
B-2	NEIGHBORHOOD CENTER BUSINESS
B-3	BUSINESS DISTRICT (RETAIL NODE)
B-4	PLANNED RETAIL VILLAGE CENTER DISTRICT
E	EDUCATION
IH	ELDERLY HOUSING
P	PROFESSIONAL OFFICE
P-1	PLANNED VILLAGE CENTER DISTRICT
PRN-1	PLANNED RESIDENTIAL NEIGHBORHOOD (AFFORDABLE HOUSING)
PRN-2	PLANNED RESIDENTIAL NEIGHBORHOOD (AFFORDABLE HOUSING)
PRN-3	PLANNED RESIDENTIAL NEIGHBORHOOD (AFFORDABLE HOUSING)
PRN-4	PLANNED RESIDENTIAL NEIGHBORHOOD (AFFORDABLE HOUSING)
PRN-5	PLANNED RESIDENTIAL NEIGHBORHOOD (AFFORDABLE HOUSING)
PRN-6	PLANNED RESIDENTIAL NEIGHBORHOOD (AFFORDABLE HOUSING)
PRN-7	PLANNED RESIDENTIAL NEIGHBORHOOD (AFFORDABLE HOUSING)
PRN-8	PLANNED RESIDENTIAL NEIGHBORHOOD (AFFORDABLE HOUSING)
R-1	RESEARCH OFFICE / LIMITED MANUFACTURING
R-1/O	RESEARCH OFFICE / LIMITED MANUFACTURING
R-1A	LOW DENSITY RESIDENTIAL
R-1/B	LOW DENSITY RESIDENTIAL
R-1/C	LOW DENSITY RESIDENTIAL
R-1/D	LOW DENSITY RESIDENTIAL
R-1/E	LOW DENSITY RESIDENTIAL
R-1/F	LOW DENSITY RESIDENTIAL
R-1/G	LOW DENSITY RESIDENTIAL
R-1/H	LOW DENSITY RESIDENTIAL
R-1/I	LOW DENSITY RESIDENTIAL
R-1/J	LOW DENSITY RESIDENTIAL
R-1/K	LOW DENSITY RESIDENTIAL
R-1/L	LOW DENSITY RESIDENTIAL
R-1/M	LOW DENSITY RESIDENTIAL
R-1/N	LOW DENSITY RESIDENTIAL
R-1/O	LOW DENSITY RESIDENTIAL
R-1/P	LOW DENSITY RESIDENTIAL
R-1/Q	LOW DENSITY RESIDENTIAL
R-1/R	LOW DENSITY RESIDENTIAL
R-1/S	LOW DENSITY RESIDENTIAL
R-1/T	LOW DENSITY RESIDENTIAL
R-1/U	LOW DENSITY RESIDENTIAL
R-1/V	LOW DENSITY RESIDENTIAL
R-1/W	LOW DENSITY RESIDENTIAL
R-1/X	LOW DENSITY RESIDENTIAL
R-1/Y	LOW DENSITY RESIDENTIAL
R-1/Z	LOW DENSITY RESIDENTIAL
R-2	LOW DENSITY RESIDENTIAL
R-2A	LOW DENSITY RESIDENTIAL
R-2B	LOW DENSITY RESIDENTIAL
R-2C	LOW DENSITY RESIDENTIAL
R-2D	LOW DENSITY RESIDENTIAL
R-2E	LOW DENSITY RESIDENTIAL
R-2F	LOW DENSITY RESIDENTIAL
R-2G	LOW DENSITY RESIDENTIAL
R-2H	LOW DENSITY RESIDENTIAL
R-2I	LOW DENSITY RESIDENTIAL
R-2J	LOW DENSITY RESIDENTIAL
R-2K	LOW DENSITY RESIDENTIAL
R-2L	LOW DENSITY RESIDENTIAL
R-2M	LOW DENSITY RESIDENTIAL
R-2N	LOW DENSITY RESIDENTIAL
R-2O	LOW DENSITY RESIDENTIAL
R-2P	LOW DENSITY RESIDENTIAL
R-2Q	LOW DENSITY RESIDENTIAL
R-2R	LOW DENSITY RESIDENTIAL
R-2S	LOW DENSITY RESIDENTIAL
R-2T	LOW DENSITY RESIDENTIAL
R-2U	LOW DENSITY RESIDENTIAL
R-2V	LOW DENSITY RESIDENTIAL
R-2W	LOW DENSITY RESIDENTIAL
R-2X	LOW DENSITY RESIDENTIAL
R-2Y	LOW DENSITY RESIDENTIAL
R-2Z	LOW DENSITY RESIDENTIAL
R-3	LOW DENSITY RESIDENTIAL
R-3A	LOW DENSITY RESIDENTIAL
R-3B	LOW DENSITY RESIDENTIAL
R-3C	LOW DENSITY RESIDENTIAL
R-3D	LOW DENSITY RESIDENTIAL
R-3E	LOW DENSITY RESIDENTIAL
R-3F	LOW DENSITY RESIDENTIAL
R-3G	LOW DENSITY RESIDENTIAL
R-3H	LOW DENSITY RESIDENTIAL
R-3I	LOW DENSITY RESIDENTIAL
R-3J	LOW DENSITY RESIDENTIAL
R-3K	LOW DENSITY RESIDENTIAL
R-3L	LOW DENSITY RESIDENTIAL
R-3M	LOW DENSITY RESIDENTIAL
R-3N	LOW DENSITY RESIDENTIAL
R-3O	LOW DENSITY RESIDENTIAL
R-3P	LOW DENSITY RESIDENTIAL
R-3Q	LOW DENSITY RESIDENTIAL
R-3R	LOW DENSITY RESIDENTIAL
R-3S	LOW DENSITY RESIDENTIAL
R-3T	LOW DENSITY RESIDENTIAL
R-3U	LOW DENSITY RESIDENTIAL
R-3V	LOW DENSITY RESIDENTIAL
R-3W	LOW DENSITY RESIDENTIAL
R-3X	LOW DENSITY RESIDENTIAL
R-3Y	LOW DENSITY RESIDENTIAL
R-3Z	LOW DENSITY RESIDENTIAL
R-4	LOW DENSITY RESIDENTIAL
R-4A	LOW DENSITY RESIDENTIAL
R-4B	LOW DENSITY RESIDENTIAL
R-4C	LOW DENSITY RESIDENTIAL
R-4D	LOW DENSITY RESIDENTIAL
R-4E	LOW DENSITY RESIDENTIAL
R-4F	LOW DENSITY RESIDENTIAL
R-4G	LOW DENSITY RESIDENTIAL
R-4H	LOW DENSITY RESIDENTIAL
R-4I	LOW DENSITY RESIDENTIAL
R-4J	LOW DENSITY RESIDENTIAL
R-4K	LOW DENSITY RESIDENTIAL
R-4L	LOW DENSITY RESIDENTIAL
R-4M	LOW DENSITY RESIDENTIAL
R-4N	LOW DENSITY RESIDENTIAL
R-4O	LOW DENSITY RESIDENTIAL
R-4P	LOW DENSITY RESIDENTIAL
R-4Q	LOW DENSITY RESIDENTIAL
R-4R	LOW DENSITY RESIDENTIAL
R-4S	LOW DENSITY RESIDENTIAL
R-4T	LOW DENSITY RESIDENTIAL
R-4U	LOW DENSITY RESIDENTIAL
R-4V	LOW DENSITY RESIDENTIAL
R-4W	LOW DENSITY RESIDENTIAL
R-4X	LOW DENSITY RESIDENTIAL
R-4Y	LOW DENSITY RESIDENTIAL
R-4Z	LOW DENSITY RESIDENTIAL
R-5	LOW DENSITY RESIDENTIAL
R-5A	LOW DENSITY RESIDENTIAL
R-5B	LOW DENSITY RESIDENTIAL
R-5C	LOW DENSITY RESIDENTIAL
R-5D	LOW DENSITY RESIDENTIAL
R-5E	LOW DENSITY RESIDENTIAL
R-5F	LOW DENSITY RESIDENTIAL
R-5G	LOW DENSITY RESIDENTIAL
R-5H	LOW DENSITY RESIDENTIAL
R-5I	LOW DENSITY RESIDENTIAL
R-5J	LOW DENSITY RESIDENTIAL
R-5K	LOW DENSITY RESIDENTIAL
R-5L	LOW DENSITY RESIDENTIAL
R-5M	LOW DENSITY RESIDENTIAL
R-5N	LOW DENSITY RESIDENTIAL
R-5O	LOW DENSITY RESIDENTIAL
R-5P	LOW DENSITY RESIDENTIAL
R-5Q	LOW DENSITY RESIDENTIAL
R-5R	LOW DENSITY RESIDENTIAL
R-5S	LOW DENSITY RESIDENTIAL
R-5T	LOW DENSITY RESIDENTIAL
R-5U	LOW DENSITY RESIDENTIAL
R-5V	LOW DENSITY RESIDENTIAL
R-5W	LOW DENSITY RESIDENTIAL
R-5X	LOW DENSITY RESIDENTIAL
R-5Y	LOW DENSITY RESIDENTIAL
R-5Z	LOW DENSITY RESIDENTIAL
R-6	LOW DENSITY RESIDENTIAL
R-6A	LOW DENSITY RESIDENTIAL
R-6B	LOW DENSITY RESIDENTIAL
R-6C	LOW DENSITY RESIDENTIAL
R-6D	LOW DENSITY RESIDENTIAL
R-6E	LOW DENSITY RESIDENTIAL
R-6F	LOW DENSITY RESIDENTIAL
R-6G	LOW DENSITY RESIDENTIAL
R-6H	LOW DENSITY RESIDENTIAL
R-6I	LOW DENSITY RESIDENTIAL
R-6J	LOW DENSITY RESIDENTIAL
R-6K	LOW DENSITY RESIDENTIAL
R-6L	LOW DENSITY RESIDENTIAL
R-6M	LOW DENSITY RESIDENTIAL
R-6N	LOW DENSITY RESIDENTIAL
R-6O	LOW DENSITY RESIDENTIAL
R-6P	LOW DENSITY RESIDENTIAL
R-6Q	LOW DENSITY RESIDENTIAL
R-6R	LOW DENSITY RESIDENTIAL
R-6S	LOW DENSITY RESIDENTIAL
R-6T	LOW DENSITY RESIDENTIAL
R-6U	LOW DENSITY RESIDENTIAL
R-6V	LOW DENSITY RESIDENTIAL
R-6W	LOW DENSITY RESIDENTIAL
R-6X	LOW DENSITY RESIDENTIAL
R-6Y	LOW DENSITY RESIDENTIAL
R-6Z	LOW DENSITY RESIDENTIAL
R-7	LOW DENSITY RESIDENTIAL
R-7A	LOW DENSITY RESIDENTIAL
R-7B	LOW DENSITY RESIDENTIAL
R-7C	LOW DENSITY RESIDENTIAL
R-7D	LOW DENSITY RESIDENTIAL
R-7E	LOW DENSITY RESIDENTIAL
R-7F	LOW DENSITY RESIDENTIAL
R-7G	LOW DENSITY RESIDENTIAL
R-7H	LOW DENSITY RESIDENTIAL
R-7I	LOW DENSITY RESIDENTIAL
R-7J	LOW DENSITY RESIDENTIAL
R-7K	LOW DENSITY RESIDENTIAL
R-7L	LOW DENSITY RESIDENTIAL
R-7M	LOW DENSITY RESIDENTIAL
R-7N	LOW DENSITY RESIDENTIAL
R-7O	LOW DENSITY RESIDENTIAL
R-7P	LOW DENSITY RESIDENTIAL
R-7Q	LOW DENSITY RESIDENTIAL
R-7R	LOW DENSITY RESIDENTIAL
R-7S	LOW DENSITY RESIDENTIAL
R-7T	LOW DENSITY RESIDENTIAL
R-7U	LOW DENSITY RESIDENTIAL
R-7V	LOW DENSITY RESIDENTIAL
R-7W	LOW DENSITY RESIDENTIAL
R-7X	LOW DENSITY RESIDENTIAL
R-7Y	LOW DENSITY RESIDENTIAL
R-7Z	LOW DENSITY RESIDENTIAL
R-8	LOW DENSITY RESIDENTIAL
R-8A	LOW DENSITY RESIDENTIAL
R-8B	LOW DENSITY RESIDENTIAL
R-8C	LOW DENSITY RESIDENTIAL
R-8D	LOW DENSITY RESIDENTIAL
R-8E	LOW DENSITY RESIDENTIAL
R-8F	LOW DENSITY RESIDENTIAL
R-8G	LOW DENSITY RESIDENTIAL
R-8H	LOW DENSITY RESIDENTIAL
R-8I	LOW DENSITY RESIDENTIAL
R-8J	LOW DENSITY RESIDENTIAL
R-8K	LOW DENSITY RESIDENTIAL
R-8L	LOW DENSITY RESIDENTIAL
R-8M	LOW DENSITY RESIDENTIAL
R-8N	LOW DENSITY RESIDENTIAL
R-8O	LOW DENSITY RESIDENTIAL
R-8P	LOW DENSITY RESIDENTIAL
R-8Q	LOW DENSITY RESIDENTIAL
R-8R	LOW DENSITY RESIDENTIAL
R-8S	LOW DENSITY RESIDENTIAL
R-8T	LOW DENSITY RESIDENTIAL
R-8U	LOW DENSITY RESIDENTIAL
R-8V	LOW DENSITY RESIDENTIAL
R-8W	LOW DENSITY RESIDENTIAL
R-8X	LOW DENSITY RESIDENTIAL
R-8Y	LOW DENSITY RESIDENTIAL
R-8Z	LOW DENSITY RESIDENTIAL
R-9	LOW DENSITY RESIDENTIAL
R-9A	LOW DENSITY RESIDENTIAL
R-9B	LOW DENSITY RESIDENTIAL
R-9C	LOW DENSITY RESIDENTIAL
R-9D	LOW DENSITY RESIDENTIAL
R-9E	LOW DENSITY RESIDENTIAL
R-9F	LOW DENSITY RESIDENTIAL
R-9G	LOW DENSITY RESIDENTIAL
R-9H	LOW DENSITY RESIDENTIAL
R-9I	LOW DENSITY RESIDENTIAL
R-9J	LOW DENSITY RESIDENTIAL
R-9K	LOW DENSITY RESIDENTIAL
R-9L	LOW DENSITY RESIDENTIAL
R-9M	LOW DENSITY RESIDENTIAL
R-9N	LOW DENSITY RESIDENTIAL
R-9O	LOW DENSITY RESIDENTIAL
R-9P	LOW DENSITY RESIDENTIAL
R-9Q	LOW DENSITY RESIDENTIAL
R-9R	LOW DENSITY RESIDENTIAL
R-9S	LOW DENSITY RESIDENTIAL
R-9T	LOW DENSITY RESIDENTIAL
R-9U	LOW DENSITY RESIDENTIAL
R-9V	LOW DENSITY RESIDENTIAL
R-9W	LOW DENSITY RESIDENTIAL
R-9X	LOW DENSITY RESIDENTIAL
R-9Y	LOW DENSITY RESIDENTIAL
R-9Z	LOW DENSITY RESIDENTIAL
R-10	LOW DENSITY RESIDENTIAL
R-10A	LOW DENSITY RESIDENTIAL
R-10B	LOW DENSITY RESIDENTIAL
R-10C	LOW DENSITY RESIDENTIAL
R-10D	LOW DENSITY RESIDENTIAL
R-10E	LOW DENSITY RESIDENTIAL
R-10F	LOW DENSITY RESIDENTIAL
R-10G	LOW DENSITY RESIDENTIAL
R-10H	LOW DENSITY RESIDENTIAL
R-10I	LOW DENSITY RESIDENTIAL
R-10J	LOW DENSITY RESIDENTIAL
R-10K	LOW DENSITY RESIDENTIAL
R-10L	LOW DENSITY RESIDENTIAL
R-10M	LOW DENSITY RESIDENTIAL
R-10N	LOW DENSITY RESIDENTIAL
R-10O	LOW DENSITY RESIDENTIAL
R-10P	LOW DENSITY RESIDENTIAL
R-10Q	LOW DENSITY RESIDENTIAL
R-10R	LOW DENSITY RESIDENTIAL
R-10S	LOW DENSITY RESIDENTIAL